

RED MOUNTAIN / MESA SUBMARKET

RETAIL SPACE FOR LEASE

2,530± SF

POWER PLAZA NEIGHBORHOOD CENTER

345 S POWER ROAD | UNIT 105 | MESA, ARIZONA 85206

SUITE 105

**OPEN RETAIL
END CAP UNIT!**



Contact John or Suzanne for additional information:



John Quatrini
Associate Broker
john@shellcommercial.com
O (480) 443-3992
C (602) 859-0506



Suzanne Enright
Senior Associate
suzanne@shellcommercial.com
O (480) 443-3992
C (602) 471-2981



O 480 443 3992 16410 N 91st Street
Suite 112 Scottsdale, AZ 85260
shellcommercial.com

The above is subject to prior sales and leasing. This information has been secured from sources we believe to be reliable, but we make no representation or warranties, expressed or implied as to the accuracy of this information.

345 S POWER ROAD | UNIT 105 | MESA, ARIZONA 85206

SIGNAGE



NEAR ALBERTSONS FOR GREAT EXPOSURE

EXCELLENT SIGNAGE VISIBILITY



END CAP UNIT NEAR HANDICAP PARKING & RAMP

SIZE: 2,530± SF

TYPE: Retail space with open floor plan, private office, two (2) work rooms, restroom

LOCATION:

- Less than 2 miles from U.S. 60 Superstition Freeway
- Traffic exposure averaging 32k± vehicles per day - Southern Ave. & Power Rd.

ZONING: C-2, City Of Mesa

USES:

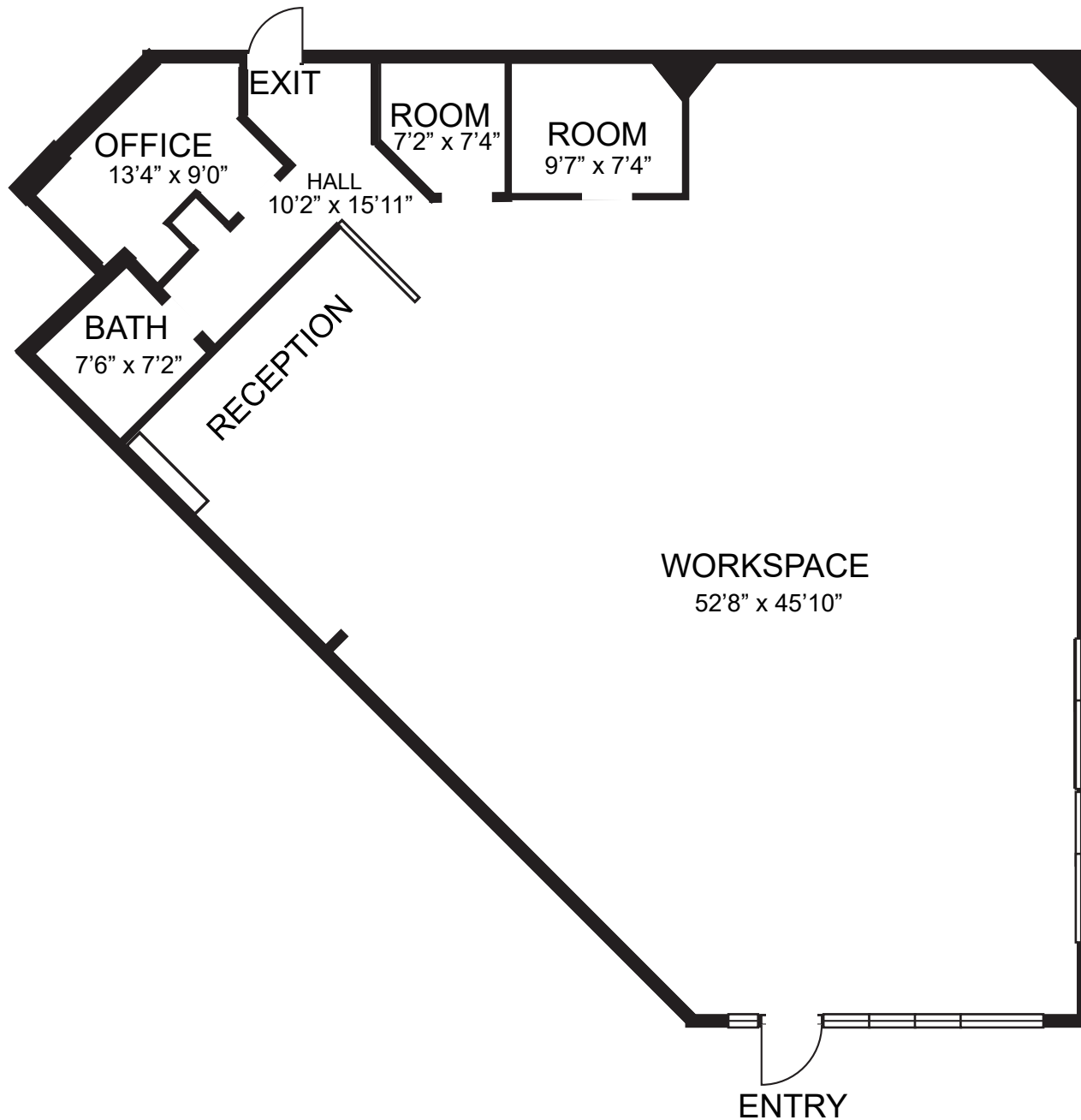
- Retail / dining
- Professional office
- Services
- Community organizations

NEARBY SHOPPING, DINING, AND OTHER AMENITIES:

Albertsons, Long John Silvers, Whataburger, Dairy Queen, Starbucks, Superstition Springs Mall, Winco, Costco, Target, Banner Health, United States Post Office



2,530± SF



NOT TO SCALE

All information furnished regarding property for sale, rental or financing is from sources deemed reliable, but no warranty or representation is made to the accuracy thereof and same is submitted to errors, omissions, change of price, rental or other conditions, prior to sale, lease or financing or withdrawal without notice. No liability of any kind is to be imposed on the broker herein. This information has been secured from sources deemed reliable, however, we make no warranties as to its accuracy.

